



GRAND  **CANYON**
GAS **LOGS**

2024
Indoor Products
GrandCanyonGasLogs.com



GRAND CANYON GAS LOGS

Our expertly crafted, ultra-realistic gas logs and larger than life flames are designed to elevate any indoor or outdoor environment, creating an unforgettable ambiance reminiscent of gathering around the campfire. Make your hearth the centerpiece of your home with Grand Canyon Gas Logs.

Established in 2014, Grand Canyon Gas Logs was created to bring handcrafted quality, hyper-realistic designs, and American-made manufacturing back to the hearth industry's gas log market - employing over 30 years of industry knowledge to foster innovation in an ever-evolving landscape. Earning the brand a highly-regarded reputation for their boutique practices and positioning Grand Canyon as the "craft beer" of the gas log industry.

Take a look at our full line of indoor and outdoor products to truly understand the Grand Canyon Gas Logs difference.



Who Is Kyle?



Meet Kyle.

He is a real-life person scanning Arizona's stunning countryside in search of the finest logs - not a mascot we created but rather a muse that inspired the foundation of Grand Canyon Gas Logs. His attention to detail and dedication to quality bring an unmatched realism not found within our industry.



Table of contents

Log Species & Sizes.....	3-15
Fireplace Cannonballs.....	16-17
Vent Free Burners & Logs	18
Accessories	19
Gas Burners	20
Assembled Systems.....	21
Valves & Control Systems.....	22

Check Grand Canyon Gas Logs Price Guide for all item numbers and pricing.

Email CustomerService@GrandCanyonGasLogs.com to request link to download GCGL Price Guide.

REAL LOGS...FROM REAL PEOPLE



Grand Canyon Gas Logs' Species & Sizes

LAVA BURNER SERIES WITH GLOWFIRE™ LOGS

Grand Canyon Gas Logs Lava vented burner series is the **FIRST** gas log system to successfully integrate the burner tubes inside the logs known as the GlowFire™ log technology.

These one-of-a-kind masterpieces gives the look and the feel of the log on fire; because it is! Each log is individually orificed and ported allowing the fuel to flow out of the log presenting the most realistic gas log set on the market. The revolutionary technology presents ultra-realistic style and design to the traditional gas log set. The innovative technology also allows for increased efficiencies by using less BTUs and creating a fuller more robust flame effect. The ceramic refractory logs radiate more heat out into the room compared to a traditional refractory gas log set.

Available in 4 convenient sizes, gas specific construction, and available with either on/off or variable flame electronic controls. The Lava burner series and GlowFire™ log technology has created a platform for endless log styles and future configuration development.



Lava Burner Series



Lava Burner Series - GlowFire™ Logs AZ Weathered Oak Charred 24"

- Install into any fireplace that is approved for burning wood
- Revolutionary GlowFire™ Log Technology
- Concealed valve and control system
- Gas Specific, non-field convertible
- 6v On/Off or Modulating Electronic Ignition System
- Low BTU's with fuller more robust flame
- Available in 18", 24", 30" and 36"

Grand Canyon Gas Logs' Species & Sizes

Lava Burner Series - GlowFire™ Logs



Lava Burner Series - GlowFire™ Logs AZ Weathered Oak Charred 18"



Lava Burner Series - GlowFire™ Logs AZ Weathered Oak Charred 30"



Lava Burner Series - GlowFire™ Logs AZ Weathered Oak Charred 24"



Lava Burner Series - GlowFire™ Logs AZ Weathered Oak Charred 36"

Grand Canyon Gas Logs' Species & Sizes

Lava Burner Series - GlowFire™ Logs



Lava Burner with Glowfire™ Logs - Arizona Weathered Oak Charred 24"

Grand Canyon Gas Logs' Species & Sizes

Arizona Weathered Oak Collection

These logs were found in the mountains of the Northern Arizona forest. In fact, all of the logs that make up this collection were gathered from one tree that was hit by lightning more than 40 years ago.

The effects of the lightning strike created bulges, twisting and cracking in the wood which are unique to our Arizona Weathered Oak Collection.

Item # AWO##LOGS

AZ Weathered Oak



Arizona Weathered Oak (AWO)
Available in 18", 21", 24", 30", 36", 42", 48" and 60".
Front View and See-Through.
Burner compatibility 2 and 3 burner.



2-Burner Arizona Weathered Oak 18"



3-Burner Arizona Weathered Oak 30"



2-Burner Arizona Weathered Oak 21"



3-Burner Arizona Weathered Oak 24"



2-Burner Arizona Weathered Oak 60"
Also available in 48"



2-Burner Arizona Weathered Oak 36"



3-Burner Arizona Weathered Oak 42"

Grand Canyon Gas Logs' Species & Sizes

JUMBO SERIES & JUMBO SLIMLINE SERIES

Our Jumbo Series matches our massive Jumbo burners with our hefty Jumbo Arizona Weathered Oak Logs. The 1" tines on the burner are a perfect complement to the 12" diameter of the Jumbo Arizona Weathered Oak front log. Big tines and big logs are not all this collection has to offer as massive flames are the final part of this 3 headed beast. Available in sizes 24" - 120" front view and see-through. Jumbo burners have a depth of 21" and the Jumbo Slimline burners are 18" deep.

Item # JUMBOAWO##LOGS

Item # JUMBOSLIMAWO##LOGS

AZ Weathered Oak JUMBO



Jumbo-Burner - Jumbo Arizona Weathered Oak 36"



Jumbo-Burner - Jumbo Arizona Weathered Oak 60"



Jumbo-Burner - Jumbo Arizona Weathered Oak 60"

Grand Canyon Gas Logs' Species & Sizes

Arizona Juniper Collection

Found in the washes and valleys of the Northern Arizona terrain, much of the character of the natural wood comes from the rainy springs and hot summers causing exotic cracking and wild twisting in the wood. Our log hunters hiked the washes hand-picking each of the logs that make up the Arizona Juniper sets. Take notice of the detail in each one of the logs that feature deep cracking, pitting and natural wood decay only perfected by Mother Nature.

Item # AJ##LOGS



2-Burner Arizona Juniper 30"

Arizona Juniper



2-Burner Arizona Juniper 18"



2-Burner Arizona Juniper 21"



2-Burner Arizona Juniper 24"



2-Burner Arizona Juniper 36"



2-Burner Arizona Juniper 42"

Arizona Juniper (AJ)
Available in 18", 21", 24", 30", 36" and 42".
Burner compatibility 2 and 3 burner.



3-Burner Arizona Juniper 18"



3-Burner Arizona Juniper 30"



3-Burner Arizona Juniper 36"



3-Burner Arizona Juniper 42"



3-Burner Arizona Juniper 21"



3-Burner Arizona Juniper 24"



3-Burner Arizona Juniper 24"

Grand Canyon Gas Logs' Species & Sizes

Arizona Western Driftwood Collection

Aptly named, this beautiful set of timber was conceived with one of the world's 7 natural wonders in mind - The Grand Canyon. This most recent addition to the company's line of hand-crafted gas logs resembles the natural terrain of the Grand Canyon along the sun baked banks of the Colorado River. Scorching summers and cool wet winters served as inspiration behind such detail. It features a washed-out, sun-bleached exterior against rich gray tones and bright white elements creating the backdrop for deep, cracking, splitting in-the-woods bark. We recommend the Western Driftwood log set as the perfect option for any transitional design.

Item # DRIFTWOOD##LOGS

Western Driftwood



2-Burner Arizona Western Driftwood 18"

Arizona Western Driftwood (WD)
Available in 18", 21", 24", 30", 36" and 42".
Front View and See-Through.
Burner compatibility 2 and 3 burner.



2-Burner Arizona Western Driftwood 21"



2-Burner Arizona Western Driftwood 24"



2-Burner Arizona Western Driftwood 36"



2-Burner Arizona Western Driftwood 42"



Arizona Western Driftwood 36"

Grand Canyon Gas Logs' Species & Sizes

Arizona Weathered Oak Charred Collection

This collection combines the detail and beauty from our native series and adds the extra dimension of an authentic charred look. Our log hunters hand-picked each of the logs and then burned the front logs right in half. Once burnt the logs are molded to capture the most realistic looking charred set on the market.
Item # AWOC##LOGS

AZ Weathered Oak CHARRED



2-Burner Arizona Weathered Oak Charred 18"

Arizona Weathered Oak Charred (AWOC)
Available in 18", 24", 30", 36" and 42".
Front View and See-Through.
Burner compatibility 2 and 3 burner.



2-Burner Arizona Weathered Oak Charred 24"



2-Burner Arizona Weathered Oak Charred 30"



3-Burner Arizona Weathered Oak Charred 36"



3-Burner Arizona Weathered Oak Charred 42"



Arizona Weathered Oak Charred 30"

Grand Canyon Gas Logs' Species & Sizes

Quaking Aspen Collection

Here is Grand Canyon Gas Logs' signature birch set. This traditional birch log set balances the cream whites with the scarred black bark from the winter snows.

Item # ASPEN##LOGS

Quaking Aspen



2-Burner Quaking Aspen 18"

Quaking Aspen (QA)

Available in 18", 24", 30", 36", 42", 48" and 60".

Front View and See-Through.

Burner compatibility 2 & 3 burner.



2-Burner Quaking Aspen 24"



2-Burner Quaking Aspen 30"



2-Burner Quaking Aspen 36"



2-Burner Quaking Aspen 42"



2-Burner Quaking Aspen 60"



Quaking Aspen 30"

Grand Canyon Gas Logs' Species & Sizes

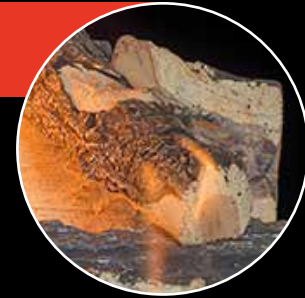
Blue Pine Split Collection

These logs were found in the bark beetle ravaged forest of Northern Arizona. The infestation of beetles left behind acres upon acres of downed trees, however it created unbelievable wood character only captured in the Blue Pine Split log collection.

The deep grain pattern and gray highlights make this look like the wood was split right in half in your fireplace. Don't like the split side, reverse the log to showcase the fantastic Alligator bark.

Item # BPS##LOGS

Blue Pine Split



Blue Pine Split (BPS)

Available in 18", 24" and 30".

Front View only.

Burner compatibility 2 and 3 burner.



2-Burner Blue Pine Split 18"



2-Burner Blue Pine Split 24"



2-Burner Blue Pine Split 30"



3-Burner Blue Pine Split 30"



3-Burner Blue Pine Split 18"



3-Burner Blue Pine Split 24"

Grand Canyon Gas Logs' Species & Sizes

Kiva Collection

A Southwest favorite, the Kiva Collection has been found to be a very versatile burner system. Designed to fit Adobelite Kiva fireplaces, burners 18", 24" and 30" have actual overall widths of 12", 18" and 21". With an overall depth of 9" this burner packs a punch for its small stature.

Log options available are the Arizona Weathered Oak or the Arizona Juniper.

Item # AWO-KIVALOGS

Item # AJ-KIVALOGS

Kiva



Kiva Arizona Juniper (AJ)

KIVA (KIVALOGS)

Available in 18", 24" and 30".

Front View only.

Burner compatibility Kiva burner.



Kiva Arizona Weathered Oak (AWO)



Kiva Arizona Weathered Oak (AWO)

Grand Canyon Gas Logs' Species & Sizes

Fireplace Fiber Cannonballs

Simple yet modern elegance describe our new Cannonballs.

These fiber refractory balls look great sitting on a bed of our Lava Granules whether the flames are turned on or off.

Add extra dimension by stacking all 3 sizes (2", 4" or 6") together.

Available in Black (B), Gray (GY) & White (WHT).

Item # CB2-12-##

Item # CB4-8-##

Item # CB6-4-##

Fireplace Cannonballs



Fireplace Fiber Cannonballs



Fireplace Fiber Cannonballs

Available in 2", 4", and 6".

Available in Black (BLK), Gray (GRY) & White (WHT).

Linear Western Driftwood

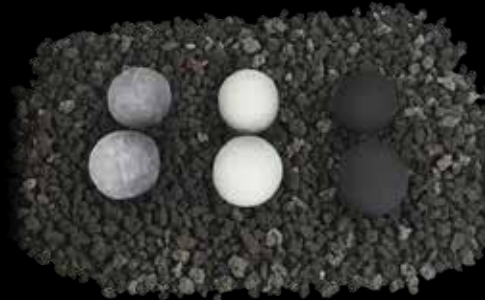
Linear Western Driftwood log set adds a transitional dimension to a linear fireplace. These uniquely crafted logs spread across the fireplace giving a wood pile effect.

Available in Linear Lengths 24" - 120"

Item # WD-LINEAR-##LOGS



Glass Burner with 24" Driftwood Logs



2" Cannonballs - Gray - White - Black



4" Cannonballs - Gray - White - Black



6" Cannonballs - Gray shown



As Seen On



On the Property's Brothers'
Celebrity IOU Season II Episode
with the Kardashian Family!

4" Cannonballs - Gray

Grand Canyon Gas Logs'

Species & Sizes

Vent Free Series

The Vent Free burner system features hand cut and painted Aspen Birch, Weathered Oak, Red Oak, or Split Oak Logs and Grand Canyon Gas Logs New Vulcan Vent Free burner system. These logs were found deep in the Northern Arizona forest and feature a deep dark bark pattern with charred white highlights just like nature intended.

Burners available in 18" & 24/30"



Standard Millivolt with Burner & Remote



IPI Electric with Burner Puck
Remote included with this
Variable Electric model only.



Variable Control with Burner
& Remote

Vent Free



NEW 24" Aspen Birch Gas Logs



Realistic hand-painted charred logs



24" Red Oak Gas Logs



18" Weathered Oak Gas Logs



24" Split Oak Gas Logs



30" Split Oak Gas Logs

- All burners include a remote
- Listed for vented & ventless use
- Individually cast & hand painted logs
- Cement refractory with reinforced steel fiber

Accessories

1/2" Reflective Glass Colors

1/2" Reflective Glass is sold in 10 pound clear plastic containers. Athena glass is designed for use in fire-pits and other fire features. When the glass is in a fire-pit or fire feature - Do not touch the glass as it is hot and will cause 3rd degree burns. Keep away from children.



Poseidon Blue
Item # RFG-10-PB



Adriatic Topaz
Item # RFG-10-AT



Vesper Black
Item # RFG-10-VB



Amber Diamond
Item # RFG-10-AG



Krystallo Diamond
Item # RFG-10-KD



Apollo Bronze
Item # RFG-10-AB



Terra Copper
Item # RFG-10-TC

Lava Rocks, Granules & Pebbles



1" - 2" Lava Pebbles
Available in 50 lb. Bags
Item # NL-3050



2" - 3" Lava Pebbles
Available in 50 lb. Bags
Item # NL-5080



Lava Granules
Available in 10 lb. Bags
Item # HP-B-GR-10



Lava Rock
Available in 10 lb. Bags
Item # HP-B-R-10

Black Glowing Embers



6 oz Bag
Item # GLE-6B

Platinum Bright Embers



1 Gram
Item # PEB-1

Black Vermiclite



6 oz Bag
Item # VEM-6

Glowing Wire



1 Gram
Item # GLW-1



Grand Canyon Gas Logs' Gas Burners

Grand Canyon Gas Logs' burners are manufactured with American pride in the Heartland of the United States. Our 2 and 3 burner systems are ANSI certified from sizes 18" - 60" and all burners manufactured are factory tested to meet ANSI standards. Each burner is coated in a 100% ceramic based paint. Hard pipes are just some of the reasons Grand Canyon Gas Logs' burners stand out from the rest. With a lifetime indoor use warranty our burners are built to stand the test of time.



Jumbo/Jumbo Slimline Burner



Available Sizes: 36" - 120"
Jumbo = 21" Depth or Jumbo Slimline = 18" Depth
Item # JUMBOBRNR-## Item # JUMBOSLIMBRNR-##

2-Burner



Available Sizes: 18", 21", 24", 30", 36",
42", *48" and *60"
Item # 2BRN-##

3-Burner



Available Sizes: 18", 24", 30", 36" and 42"
Item # 3BRN-##

* Height of a 3 burner

Kiva Burner



Available Sizes: 18 (12"), 24 (18") and 30 (21")
Item # KIVABRN-##

2-Burner See Through



Available Sizes: 18", 21", 24", 30", 36",
42", 48" and 60"
Item # 2BRN-ST##

* Height of a 3 burner

3-Burner See Through



Available Sizes: 18", 21", 24", 30", 36" and 42"
Item # 3BRN-ST##

Glass Burner



Available Sizes: 18" - 60"
Item # GLASSBRN-##/12-H or GLASSBRN-##/14-H

Assembled Burners

ASSEMBLED INDOOR 2 and 3 BURNERS
 Assembled burner systems feature factory tested and installed control systems. Tested to the ANSI standard, these assembled systems are a plug and play approach. Indoor use ONLY, 100% ceramic based paint. Construction with metal bar stock and burner pipes. All burner kits include burner, lava rock, black embers, flex line, damper clamp & vermiculite (LP ONLY). ** Gas Type (NG or LP)



2-Burner - Safety Pilot



Assembled burner natural gas with safety pilot system.
 2BRN-##-***-SP

3-Burner - Safety Pilot



Assembled burner natural gas with safety pilot system.
 3BRN-##-***-SP

2-Burner - Millivolt & Remote



Assembled burner natural gas with millivolt and remote system.
 2BRN-##-***-MVK-GCRK

3-Burner - Millivolt & Remote



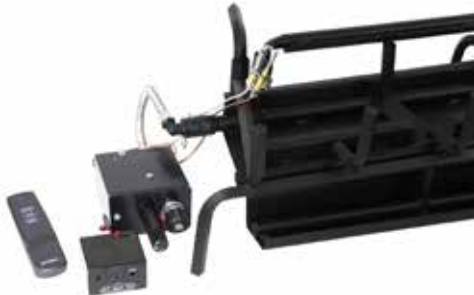
Assembled burner natural gas with millivolt and remote system.
 3BRN-##-***-MVK-GCRK

2-Burner - Modulating Millivolt & Remote



Assembled burner natural gas with modulating millivolt and remote system.
 2BRN-##-***-MMVR

3-Burner - Modulating Millivolt & Remote



Assembled burner natural gas with modulating millivolt and remote system.
 3BRN-##-***-MMVR

2-Burner - Battery Electronic & Remote



Assembled burner natural gas with battery electronic and remote system.
 2BRN-##-***-MVKEI-GCRK

3-Burner - Battery Electronic & Remote



Assembled burner propane with battery electronic and remote system.
 3BRN-##-***-MVKEI-GCRK

Grand Canyon Gas Logs'

Valves & Control Systems

Manual Valve



90K BTU Rating
Item # MA

Safety Pilot System



90K BTU Rating
Item # SPQMKLP or SPQMKN

High Capacity Safety Pilot System



142K BTU Rating
Item # HCSPK-LP or HCSPK-N

Millivolt System



82K Natural Gas BTU Rating
110K Propane BTU Rating
Item # MVQMKLP or MVQMKN

High Capacity Millivolt System



240K Natural Gas BTU Rating
320K Propane BTU Rating
Item # HCMVQMKLP or HCMVQMKN

Modulating Millivolt System



120K (NG & LP) BTU Rating
Item # MMVKR-LP or MMVKR-NG

Battery Electronic



120K Natural Gas BTU Rating
140 K Propane BTU Rating
Item # MVKEIKLP or MVKEIKN

Grand Canyon Remote Kit



85K BTU Rating
Item # GCRK

Electronic Ignition System Box



200K Natural Gas BTU Rating
320K Propane BTU Rating
Item # EIS, EIS-LP, EIS-10 or EIS -LP-10

N = Natural Gas
LP = Liquid Propane



GRAND CANYON GAS LOGS

RPG BRANDS

RPG BRANDS FAMILY OF COMPANIES

MODERN
ELECTRIC

FLAMES
FIREPLACES

WILDFIRE
OUTDOOR LIVING

GRAND
GAS

CANYON
LOGS

www.GrandCanyonGasLogs.com

PHONE: 602-344-4217

customerservice@grandcanyongaslogs.com

*Copyright © 2024 RPG Brands and Grand Canyon Gas Logs. All rights reserved.
Products and specifications subject to change without notice.*